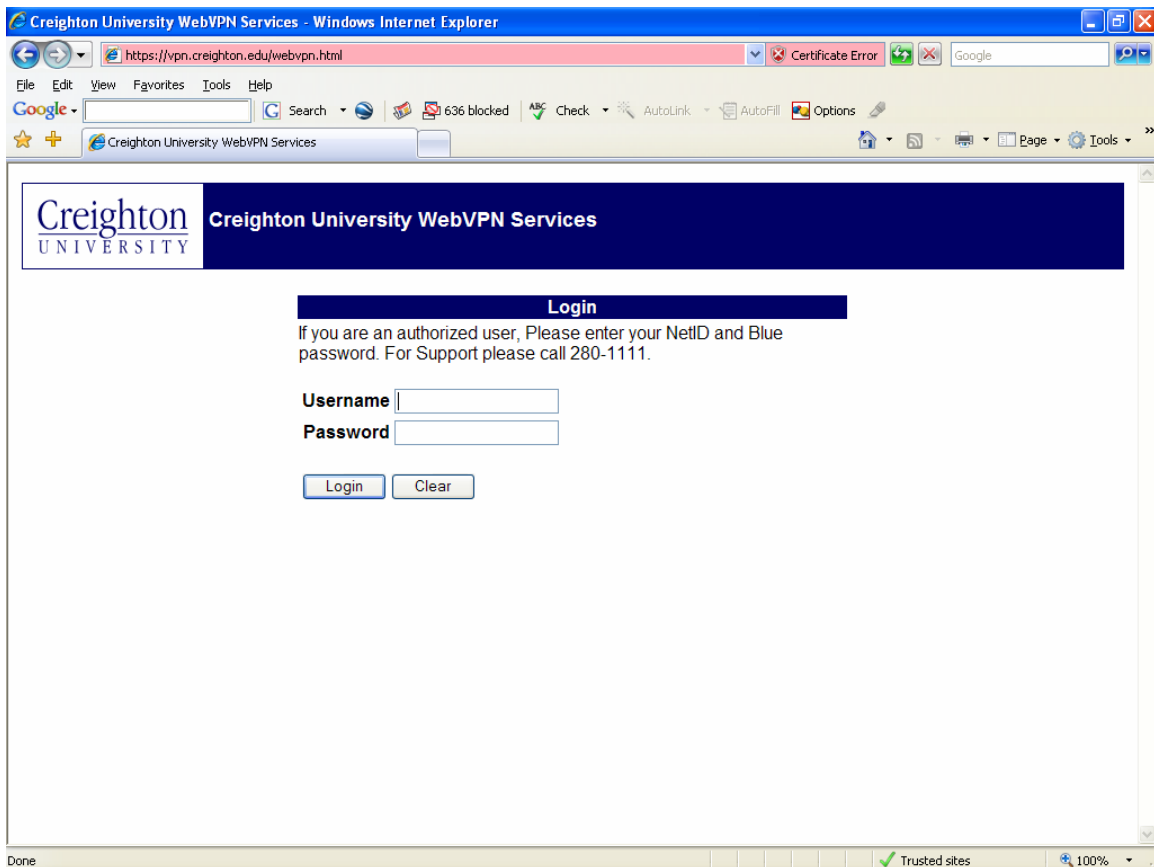


Accessing PACs from home

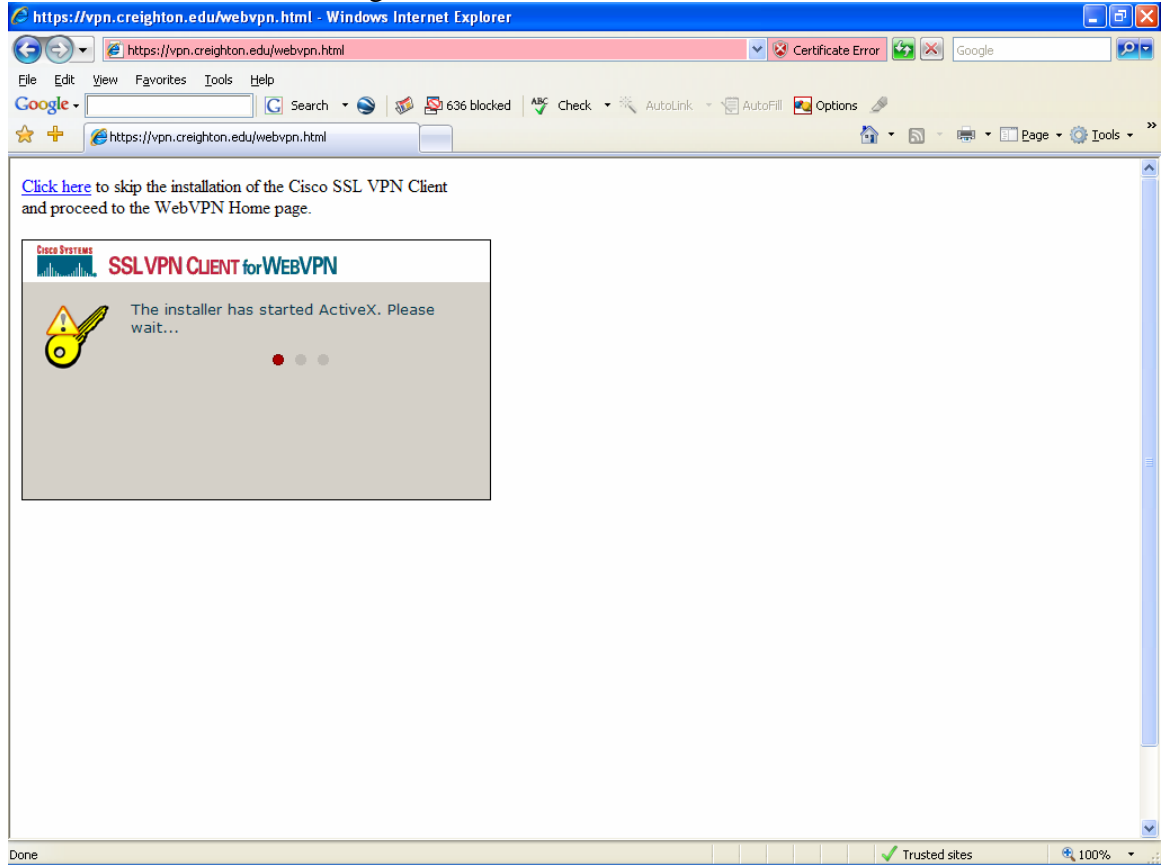
1. Go to <https://vpn.creighton.edu>
2. Enter your Blue username and password.



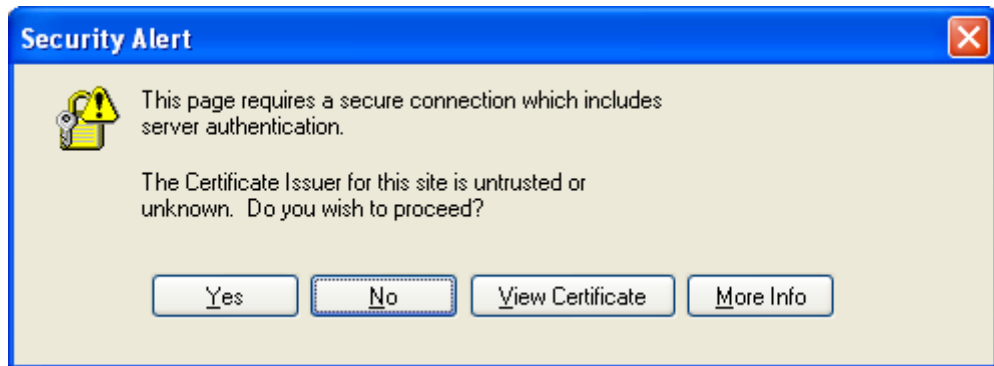
3. Click the install button on this security box.

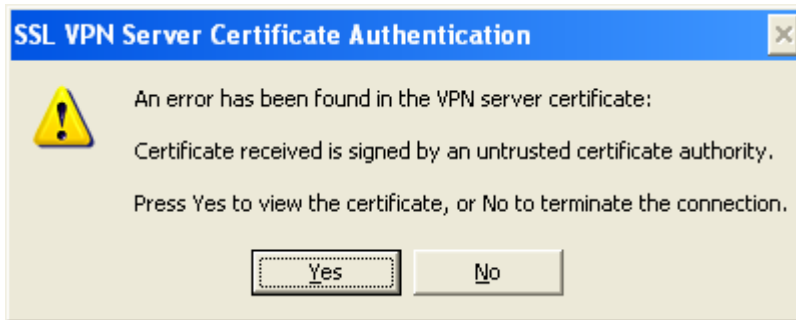


4. The software will begin to install.

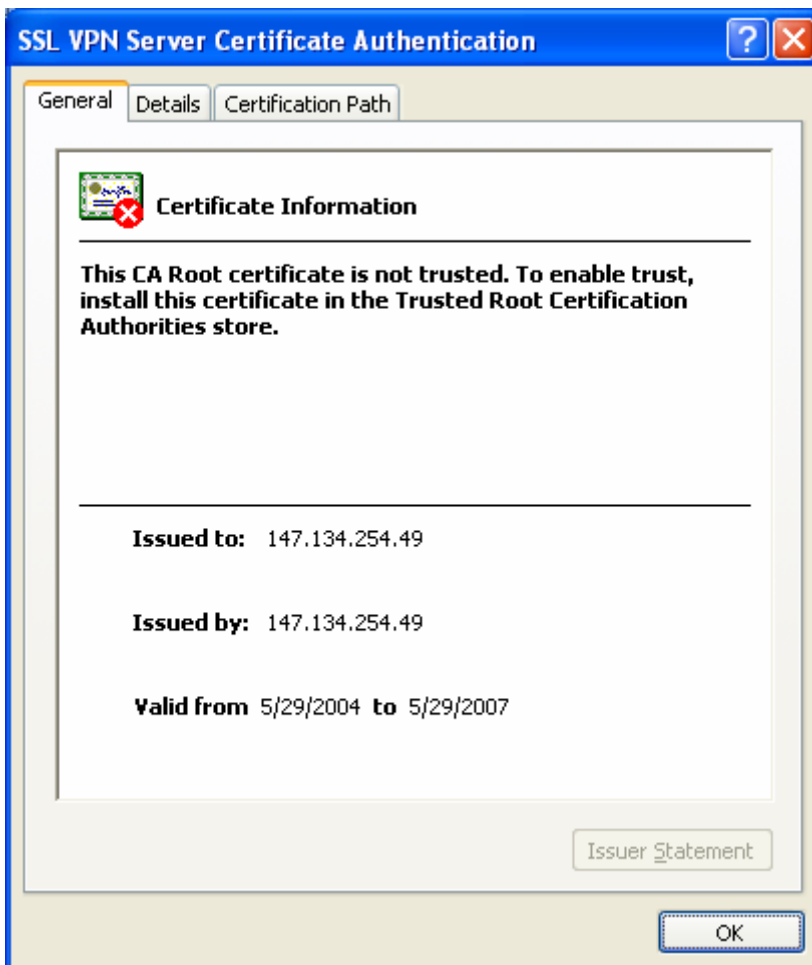


5. Click yes to any addition security boxes that appear.





6. Click OK if you see the certificate authentication screen



7. Then click yes to accept the certificate.



8. After a successful install you will see the Remote User Links web page which links to PACs

