



Directions to Creighton University: I-80 to I-480 (Downtown), take Hwy 75, take first exit (Cuming Street), turn right.

Parking

Park next to the Criss Building, or on Burt Street, or in the Cuming Street parking lot.

Symposium Location

Hixson-Lied Science Building Auditorium G04, ground floor. Enter from Burt Street.

Our Sponsors

**Creighton University School of Medicine –
LI-COR – Olympus/ Hirschfel Instruments
– Invitrogen – BD Bioscience/ North
Central Instruments – Spectra-Physics**

Organization

*Richard Hallworth
Department of Biomedical Sciences
Creighton University
2500 California Plaza
Omaha, Nebraska 68178
Phone: 402 280-3057
FAX: 402 280-2690
Email: hallw@creighton.edu*

Novel Imaging Technologies in Biomedicine
Department of Biomedical Sciences
Creighton University
2500 California Plaza
Omaha, NE 68178

**Creighton
UNIVERSITY
Medical Center**



**Creighton
UNIVERSITY
Medical Center**

5th Omaha Imaging Symposium

Novel Imaging Technologies in Biomedicine

**Saturday, September 13th, 2008
Creighton University
Omaha, Nebraska**

invitrogen™

LI-COR®
Biosciences

Spectra-Physics
A Division of Newport Corporation

**NORTH CENTRAL
INSTRUMENTS**

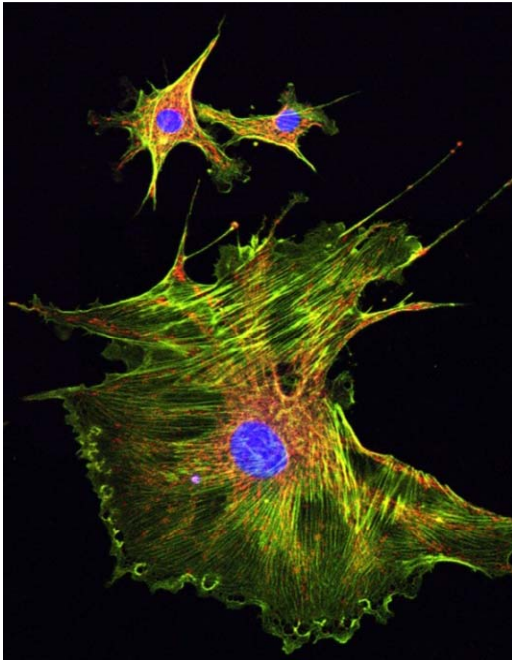


Hirschfel Instruments, Inc.
Precision Products for Laboratory & Research • Sales and Service Since 1977.
www.hirschfel.com • phone: 800-242-3001 • fax: 314-644-6577

**FIRST-CLASS
US POSTAGE
PAID
OMAHA, NE
Permit #172**



OLYMPUS



NOVEL IMAGING TECHNOLOGIES IN BIOMEDICINE

Saturday, September 13th, 2008

The fifth in an annual series of symposia sponsored by the Creighton University School of Medicine, featuring national and local speakers. These symposia are designed to bring the latest in optical, imaging and other biophysical techniques to Nebraska life scientists and students, and to highlight original research by Nebraska researchers.

The Symposium will run from 9.00 a.m. to about 3:15 p.m. Lunch will be available on-site.

Microscopy and other vendors will be present. Exhibits open at 8:00 a.m.

The I.B.I.F. multi-photon confocal microscope will be available for viewing after the symposium. Bring your own specimens!

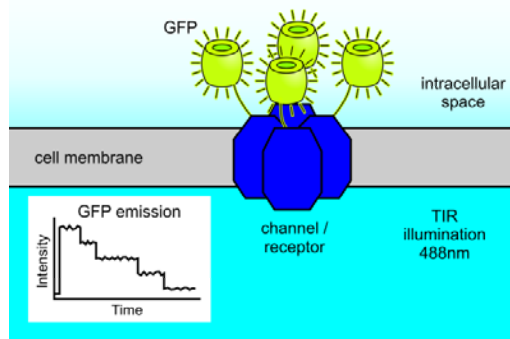
Web site

<http://biomedsci.creighton.edu/2008symposium>

Registration Information

Open to faculty and students from Nebraska and the region. Pre-registration is free on-line. Register at the symposium web site or by email to the organizer.

On-site registration is \$5 for faculty and post-docs. free for students.



Speakers and Topics

DETERMINING PROTEIN SUBUNIT NUMBER AND STOICHIOMETRY BY SINGLE MOLECULE SUBUNIT COUNTING Maximilian Ulbrich, Department of Molecular and Cell Biology, University of California, Berkeley

MULTI-PHOTON MICROSCOPY IN THE IDENTIFICATION OF PRECANCEROUS TISSUE Melissa Skala, Department of Biomedical Engineering, Duke University

METAL ENHANCED FLUORESCENCE IN THE NEAR INFRARED: A MARRIAGE OF TWO TECHNOLOGIES Jon Anderson, LI-COR Inc, Lincoln, NE

PROTEOME-WIDE FLUCTUATION ANALYSIS OF SACCHAROMYCES CEREVISIAE Joseph Huff, Stowers Institute for Medical Research, Kansas City, MO

IMAGING APPROACHES IN NEUROSCIENCE: FROM BLOOD FLOW TO CONSCIOUSNESS Stephen L. Macknik, Barrow Neurological Institute, Phoenix, AZ

PROBING OLFACTORY FUNCTION WITH G-CAMP2: IMAGING NEURAL ACTIVITY IN MICE WITH A GENETICALLY ENCODED CALCIUM SENSOR C. Ron Yu, Stowers Institute for Medical Research, Kansas City, MO

METABOLIC IMAGING USING TWO-PHOTON FLUORESCENCE LIFETIME IMAGING OF NADH Michael Nichols, Department of Physics, Creighton University, Omaha, NE

